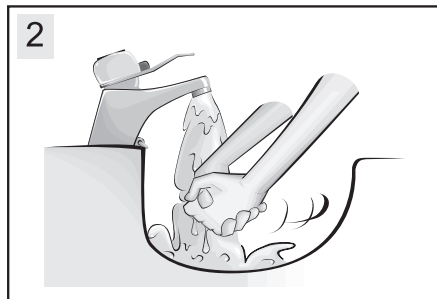
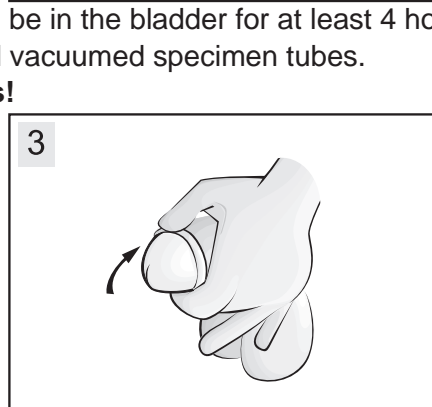
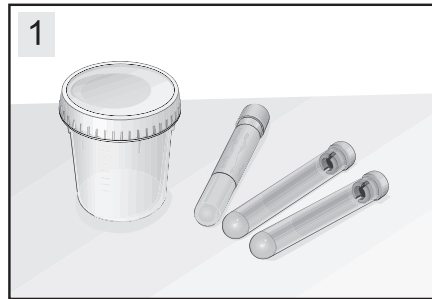


VIRTSANÄYTE KUVAOHJE, MIEHET ENLANNINKIELINEN (MID STREAM URINE TEST, MEN)

Collection of mid stream urine, males

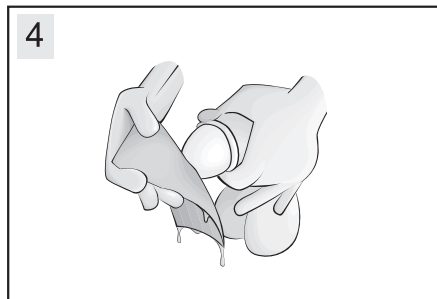
For a reliable sample, urine should be in the bladder for at least 4 hours. You have received a container and vacuumed specimen tubes.

Do not open the specimen tubes!

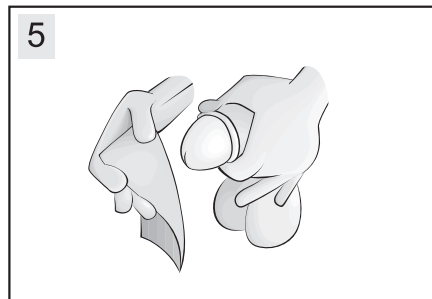


Wash your hands.

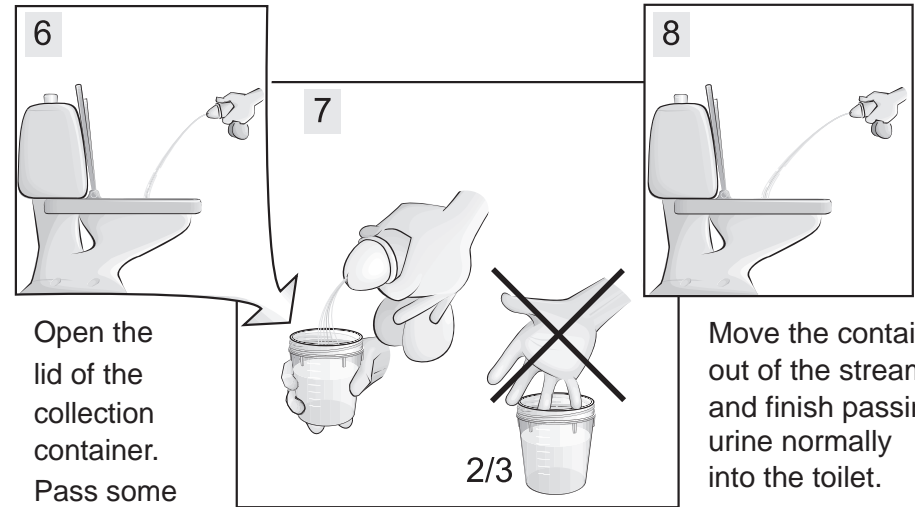
Draw back your foreskin.



Wash the head of the penis with running water or a wet paper towel 4 times.



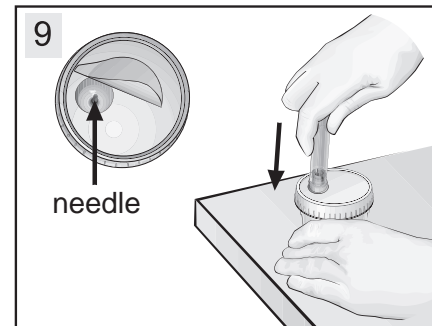
Dry with a paper towel.



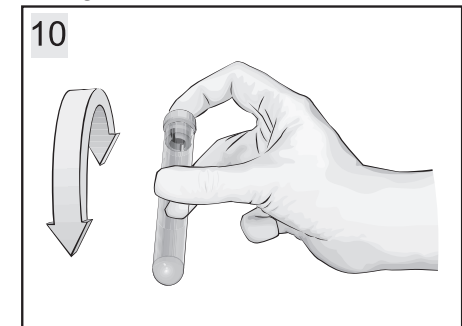
Open the lid of the collection container. Pass some urine into the toilet.

Move the container into the stream without breaking it and fill about 2/3 of the container. Avoid touching the inside.

Move the container out of the stream and finish passing urine normally into the toilet.



Close the container. Remove the label from the lid. Do not touch the needle. On a firm surface, press each tube (stopper first) down against the needle until the urine streams in. Fill each tube.



Turn the tubes upside down for 6 times. Bring the tubes to the laboratory as soon as possible.

Identifying the sample is important. Please fill in the following:

Name: _____

Personal ID number: _____

You previously passed urine _____ hours before this sample.

Date and time of collection: ____/____/____ at ____ o'clock ____