

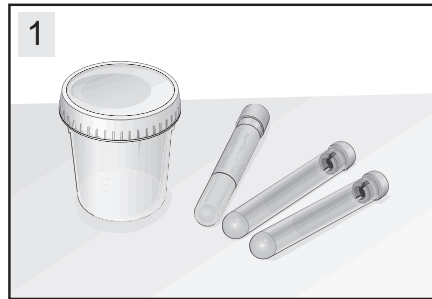
## **VIRTSANÄYTE KUVAOHJE, POJAT ENGLANNINKIELINEN (MID STREAM URINE TEST, BOYS)**

T. Heittola

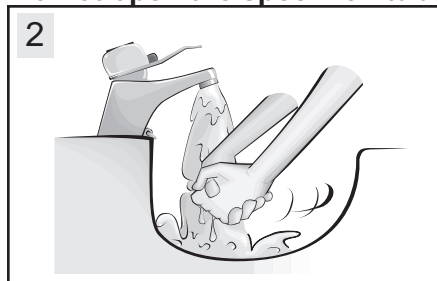
## Collection of mid stream urine, boys

For a reliable sample, urine should be in the bladder for at least 4 hours. You have received a container and vacuumed specimen tubes.

**Do not open the specimen tubes!**

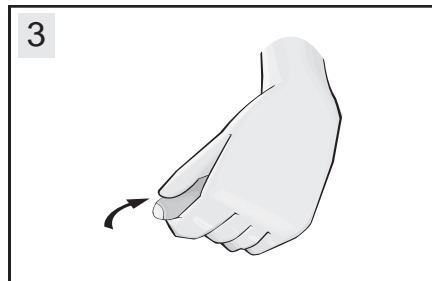


1



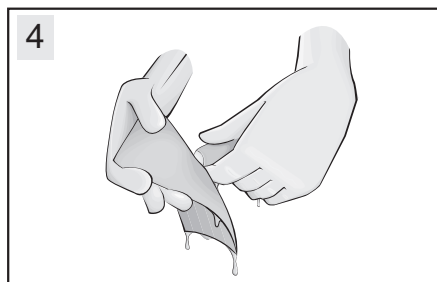
2

Wash your hands.



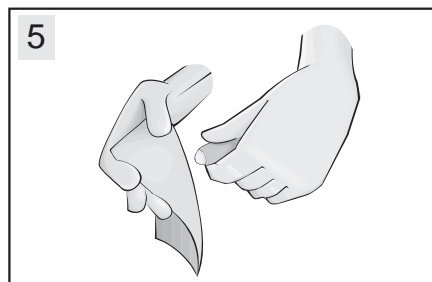
3

Draw back boy's foreskin.



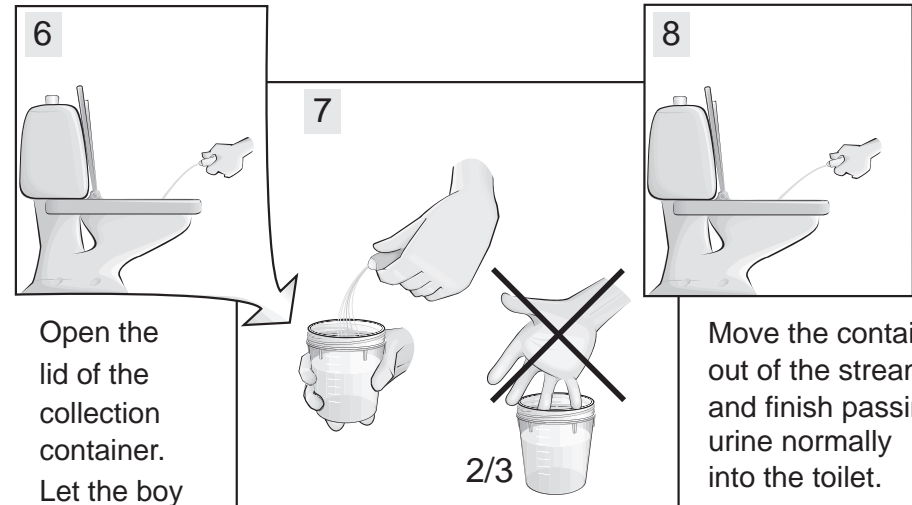
4

Wash the head of the penis with running water or a wet paper towel 4 times.



5

Dry with a paper towel.



6

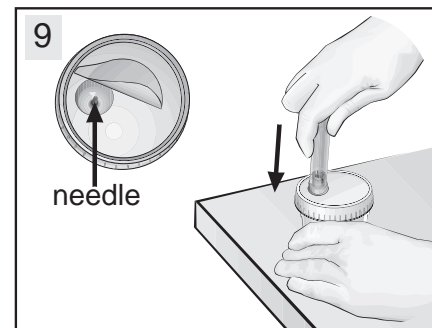
Open the lid of the collection container. Let the boy pass urine into the toilet.

7

Move the container into the stream without breaking it and fill about 2/3 of the container. Avoid touching the inside.

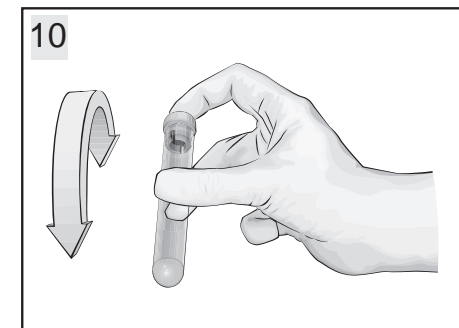
8

Move the container out of the stream and finish passing urine normally into the toilet.



9

Close the container. Remove the label from the lid. Do not touch the needle. On a firm surface, press each tube (stopper first) down against the needle until the urine streams in. Fill each tube.



10

Turn the tubes upside down for 6 times. Bring the tubes to the laboratory as soon as possible.

Identifying the sample is important. Please fill in the following:

Name: \_\_\_\_\_

Personal ID number: \_\_\_\_\_

You previously passed urine \_\_\_\_\_ hours before this sample.

Date and time of collection: \_\_\_\_/\_\_\_\_/\_\_\_\_ at \_\_\_\_ o'clock \_\_\_\_