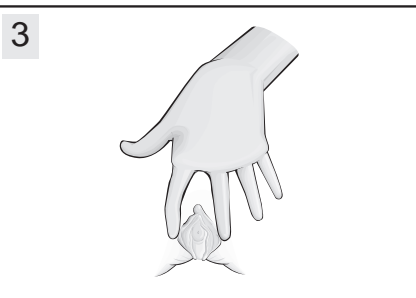
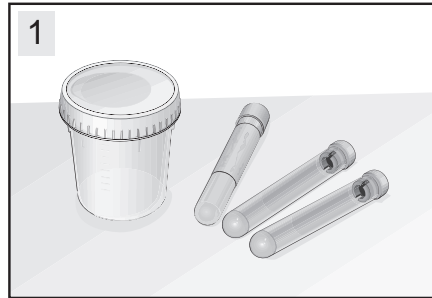


VIRTSANÄYTE KUVAOHJE, TYTÖT ENGLANNINKIELINEN (MID STREAM URINE TEST, GIRLS)

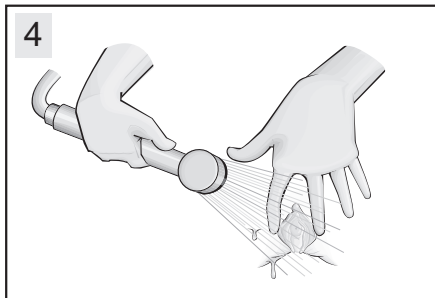
Collection of mid stream urine, girls

For a reliable sample, urine should be in the bladder for at least 4 hours. You have received a container and vacuumed specimen tubes.

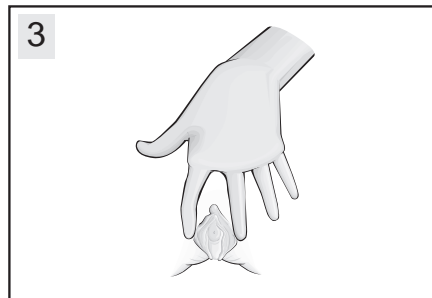
Do not open the specimen tubes!



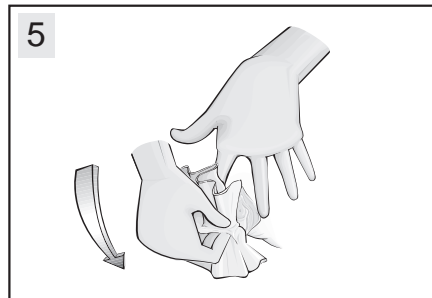
Wash your hands.



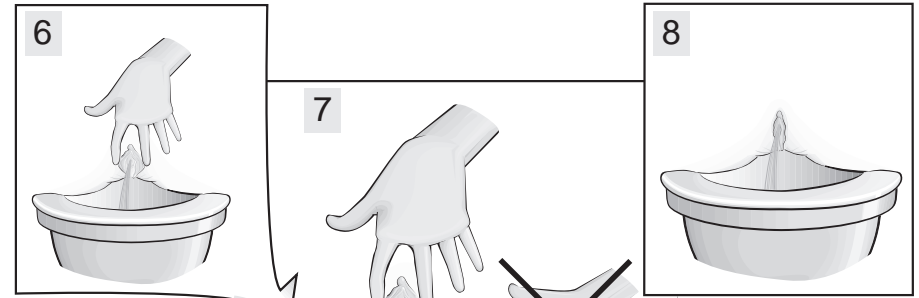
Wash the girl's outer genital with running water.



Spread the girl's labia.



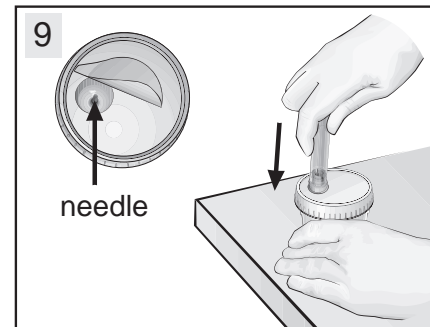
Dry with a paper towel wiping from front to back.



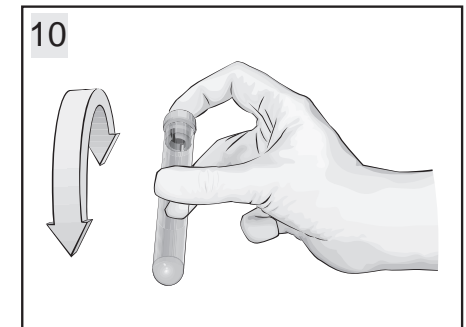
Open the lid of the collection container. Let the girl pass urine to the toilet.

Move the container into the stream without breaking it and fill about 2/3 of the container. Avoid touching the inside.

Move the container out of the stream and finish passing urine normally into the toilet.



Close the container. Remove the label from the lid. Do not touch the needle. On a firm surface, press each tube (stopper first) down against the needle until the urine streams in. Fill each tube.



Turn the tubes upside down for 6 times. Bring the tubes to the laboratory as soon as possible.

Identifying the sample is important. Please fill in the following:

Name: _____

Personal ID number: _____

You previously passed urine _____ hours before this sample.

Date and time of collection: ____/____/____ at ____ o'clock ____